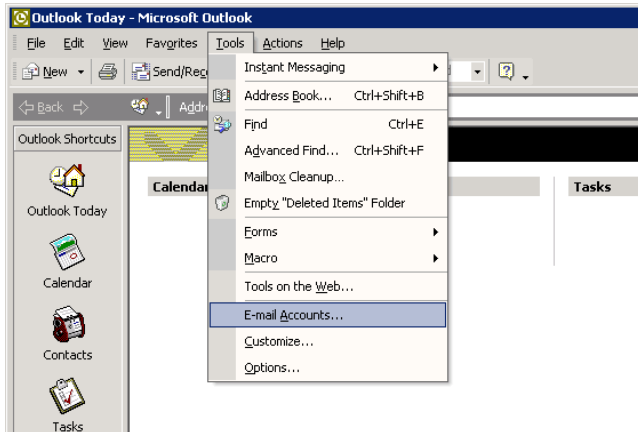
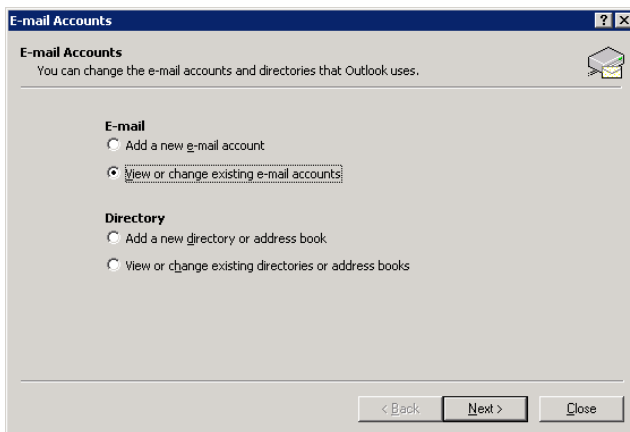


## MS Office Outlook

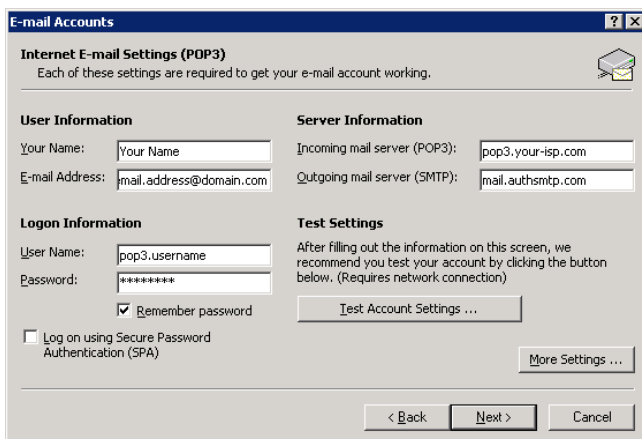
Far undir *“Tools”* og inná *“E-mail Accounts”*



Vel *“View or change existing e-mail accounts”*



Lat alt vera sum tað var áðrenn, og trýst á *“More settings”* niðast til høgru

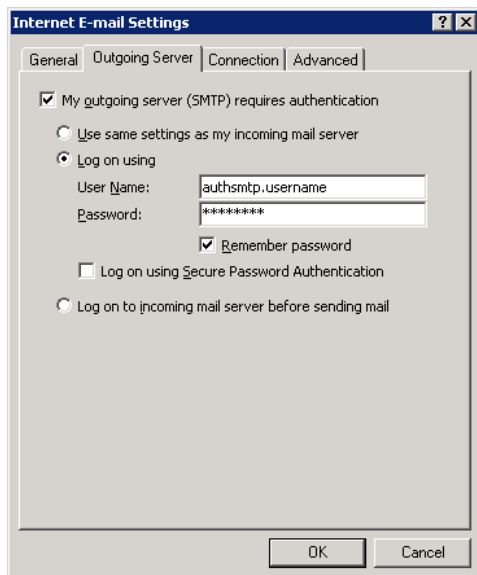


Far á næsta fana-blaðið *“outgoing server”*

og set flugubein í *“My outgoing server (smtp) ...”*

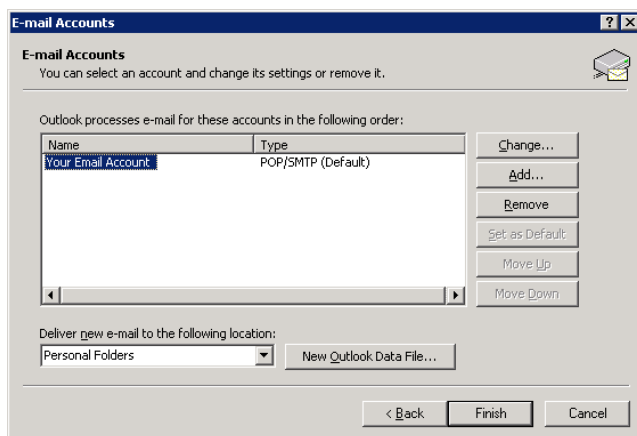
Vel so *“Log on using”*

Username og password eru tey somu, sum tú brúkar til tín kallnet.fo teldupost kassa.



Vel at goyma loyniorðið og set eitt flugubein í *“Log on using Secure Password Authentication”*

Trýst á OK



Týst á *“Finish”* og uppsetingin er broytt.