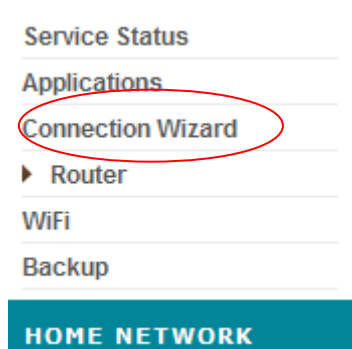


## Uppseting av brúkara

Far inn á Internet Explorer og tasta 192.168.1.1 á leitilinjuna fyri at koma inn á heimasíðuna hjá beinaranum.



Vel Connection Wizard.



Vel nú "ADSL offer", "ADSL Faroe Islands", tasta síðani brúkaranavn og loyniorð smb. loyvisbrævinum frá Vodafone og vel síðani OK.

This is your first connection to the Vodafone DSL router. Please choose the offer you subscribed to finish the configuration of your Vodafone DSL router.

- ADSL offer
- Optical fiber offer

> OK

This is your first connection to the Vodafone DSL router. Please choose the offer you subscribed to finish the configuration of your Vodafone DSL router.

- ADSL offer
- Vodafone ADSL line
- Wholesale line
- ADSL Faroe Islands

User name

DSLxxxxxxx

Password

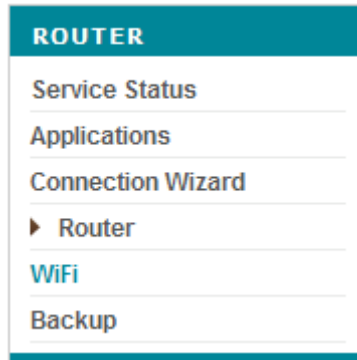
xxxxxxxxx

- Optical fiber offer

> OK

## Uppseting tráðleysst net

Vel **WiFi**



Vel nú SSID – Heiti á tí tráðleysa netinum. Kann eita hvat tað skal verða. Niðanfryi er bert eitt dømi.

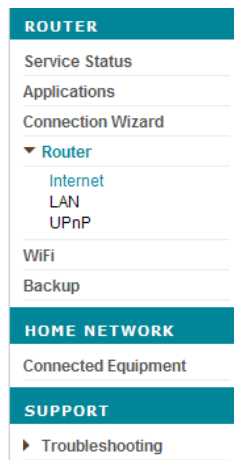
Set "Security" til **WPA/WPA2** og **TKIP**.

Vel síðani eitt loyniorð, ið er samansett av í minsta lagi 8 teknum/bókstavum.

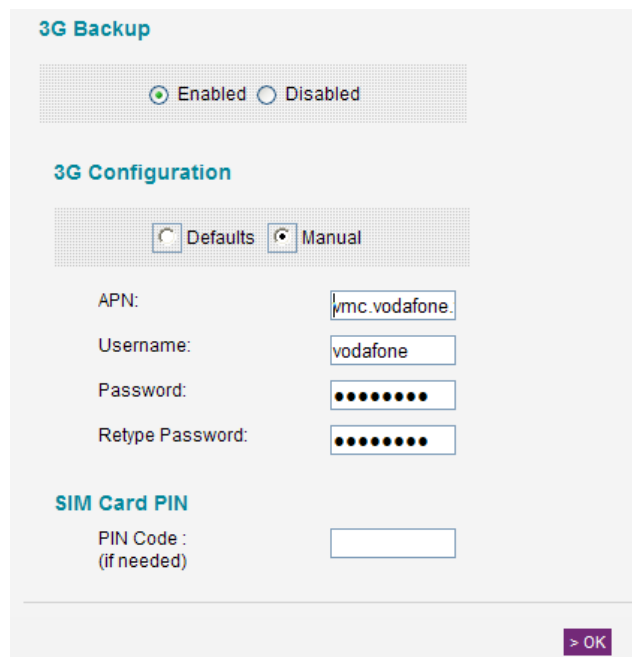
The screenshot shows the "General WiFi parameters" and "SSID 1 WiFi parameters" sections. In the "General WiFi parameters" section, "WiFi is enabled" is checked, and "Enabled" is selected. In the "SSID 1 WiFi parameters" section, "Status of SSID" is "Enabled". The "SSID (name of WiFi network)" is "okkara net". Under "Security", "WPA/WPA2" is selected. The "Select option:" dropdown is set to "TKIP". The "Password (Ascii)" is "12345678". Red dashed arrows point from the text above to the "SSID" and "Security" fields. A blue dashed arrow points from the text above to the "WPA/WPA2" radio button. A grey dashed arrow points from the text above to the "Password" field.

## 3G dongul:

Vel **Router** og síðan **Internet**.



Vel nú **Enabled** undir 3G Backup og síðani Uppseting **Manual** í 3G Configuration



**3G Backup**

Enabled  Disabled

**3G Configuration**

Defaults  Manual

APN:

Username:

Password:

Retype Password:

**SIM Card PIN**

PIN Code :

> OK

Tasta síðani fylgjandi:

APN: *vmc.vodafone.fo*  
Username: (dømi) *vodafone*  
Password: (dømi) *vodafone*  
PIN Code: "*koda á SIM-korti*" - Standard er 1234

Tá tú fær samband við alnótina, verður tú kunnaður um, at tú nú koyrir eftir teimum prísnum, ið er galdandi fyri 3G haldið hjá tær.

## Backup 3G Internet Connection

**3G Parameters**

You have to check parameters before trying to use 3G.

Login:	<input type="text" value="vodafone"/>
Password:	<input type="password" value="••••••"/>
APN:	<input type="text" value="vmc.vodafone"/>
Dial Number:	<input type="text" value="*99#"/>
CGDCONT:	<input type="text" value="1"/>
Pin Code:	<input type="text" value="1234"/>

[> Update parameters](#)

**Backup 3G**

With using backup 3G, you'll charged with 3G Price Plans  
You have asked <http://www.portal.fo/>

[> Use 3G](#)

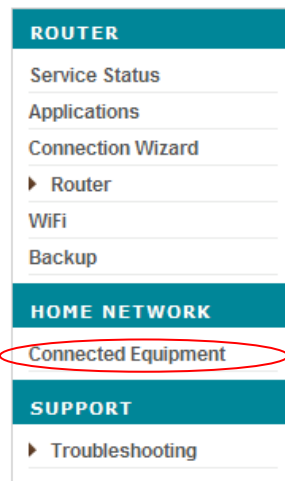
## Broyta IP- og hostname

The screenshot shows the 'Home network addresses' configuration page in a router's web interface. The left sidebar contains a navigation menu with the following items: ROUTER, Service Status, Applications, Connection Wizard, Router (highlighted with a red circle), Internet (highlighted with a red circle), LAN (highlighted with a red circle), UPnP, WiFi, and Backup. Below this is the HOME NETWORK section with Connected Equipment, and the SUPPORT section with Troubleshooting. The main content area has a breadcrumb trail: Home > Router / Router > LAN. The title is 'Home network addresses'. Below the title is a brief description: 'You can use this function to automatically configure your home network so that your computers can share the Internet connection. If you prefer, you can still enter your parameters manually.' The configuration is divided into two sections: 'Parameters of home network addresses' and 'DHCP server configuration'. In the first section, there are three input fields: 'IP address of router' (192.168.1.1), 'Subnet mask' (255.255.255.0), and 'Hostname on LAN' (vodafonedslrouter, circled in red). In the second section, there is a radio button selection for 'Enabled' (selected) and 'Disabled'. Below this are three more input fields: 'Start of IP address range' (192.168.1.2), 'End of IP address range' (192.168.1.200), and 'Lease' (Unlimited).

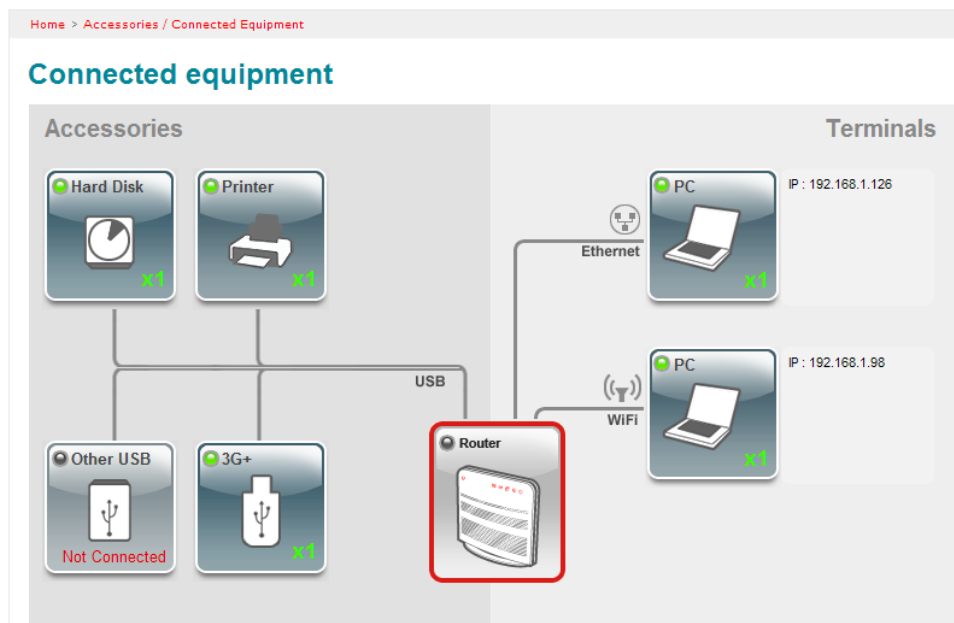
Her kannst tú broyta navn og IP-adressu á beinranum.  
Ikki broyta annað enn "Hostname on LAN", uttan so, at tú veit hvat tú ger.

## Íbinding av externum eindum. (Dømir)

Far inn á Internet Explorer og tasta 192.168.1.1 fyri at koma inn á heimasíðuna hjá beinaranum.



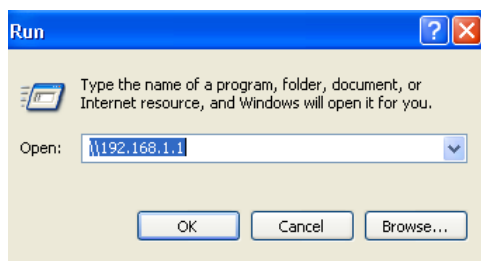
Tvíklic্ক á Connected Equipment og niðanfyri vísta mynd kemur fram.



Á myndini sæst hvat er íbundið beinaran. Ikonin, har ið grønt ljós er á, vísur hvør og hvussu nógvir eindir eru íbundnar. Fleiri eindir av sama slag kunna setast til. Tó ber einans til at seta *eina* 3G donglu og *ein* printara á.

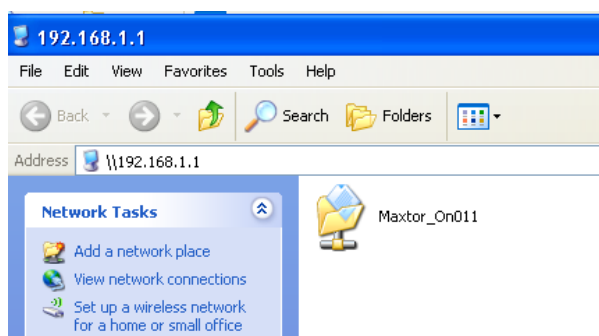
Lat okkum taka diskin fyrst.

Vel  og vel Kør (Run) og tasta IP-adressu ella navn á beinranum.

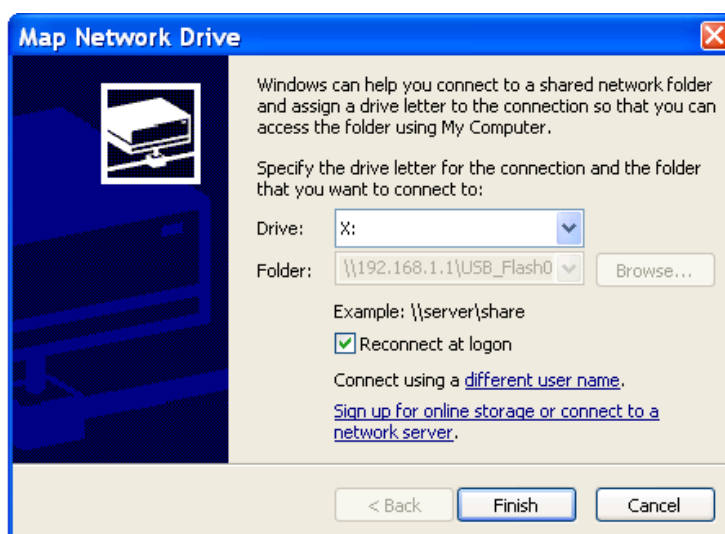


Sum standard er tað \\192.168.1.1 og vodafonedslrouter. Minnst til 2 x bakskák (\\).

Síðani kemur henda myndin fram.



Høgraklikk á ikonina og vel síðani “Map Network Drive”. Onnur mynd kemur fram og har skal tú velja hvat bókstav diskurin skal hava og enda so við “Finish”



Hetta er so eitt dømi uppá ein Maxtor harðdisk, ið er íbundin beinran.



Standard loyniorðið er “vodafone” um það ikki er broytt til annað av brúkaranum.  
Nú er atgongd til diskin.



## Íbinding av printara

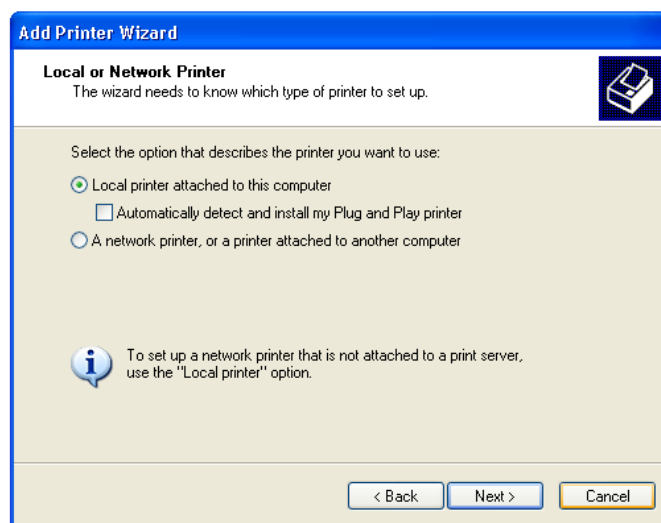
Installera drivaran til printaran.

Set USB kaðal millum beinaran og printaran.

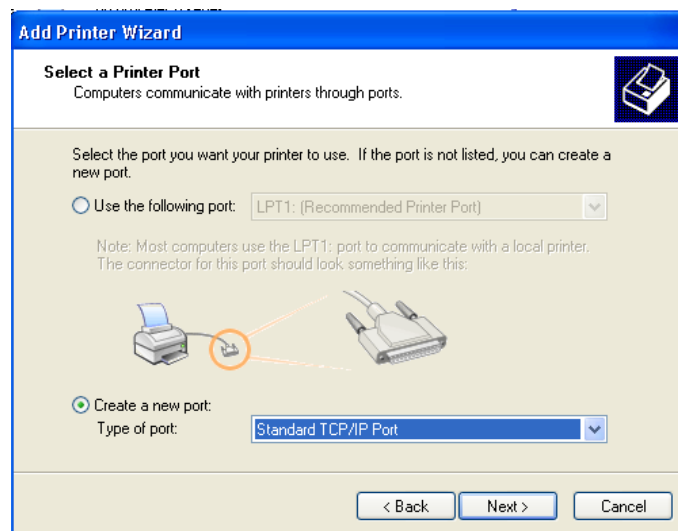
(sí Íbinding av externum eindum.)

Um **1x** stendur í myndini, sum vísur til prentaran, so er rætt íbundið.

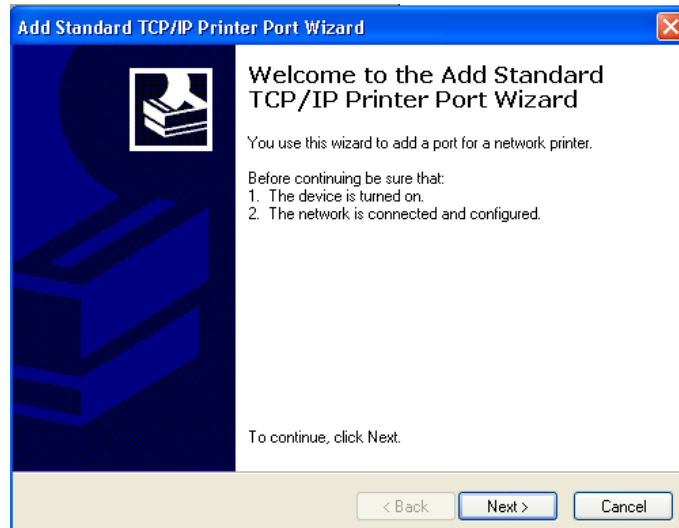
Far nú inn á “kontrolpanel” og vel Printer og Fax og vel Síðani “Tilføj Printer”; vel “Næste” og hendan myndin kemur fram:



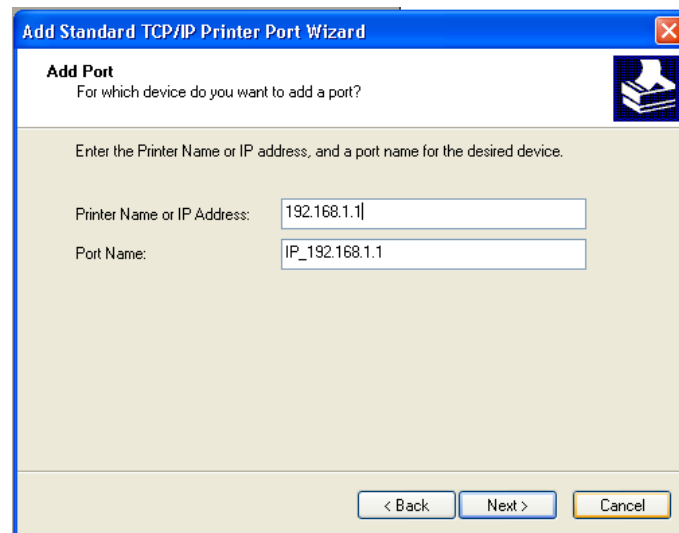
Vel samsvarandi valinum á myndini og vel “Næste”



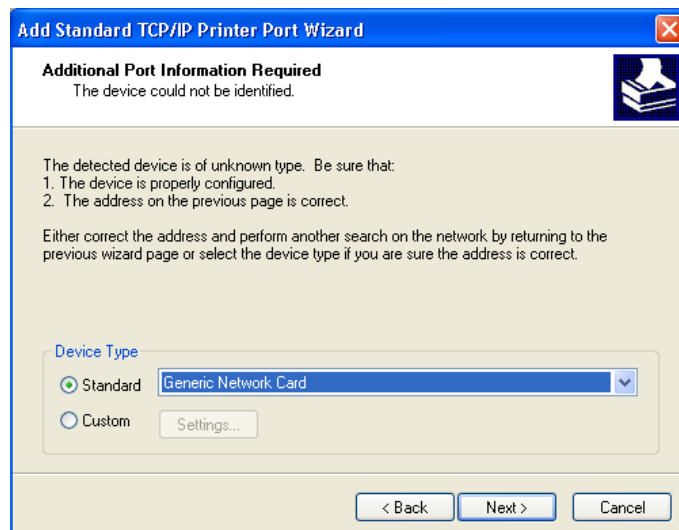
Vel somuleiðis samsvarandi myndini og “Næste”



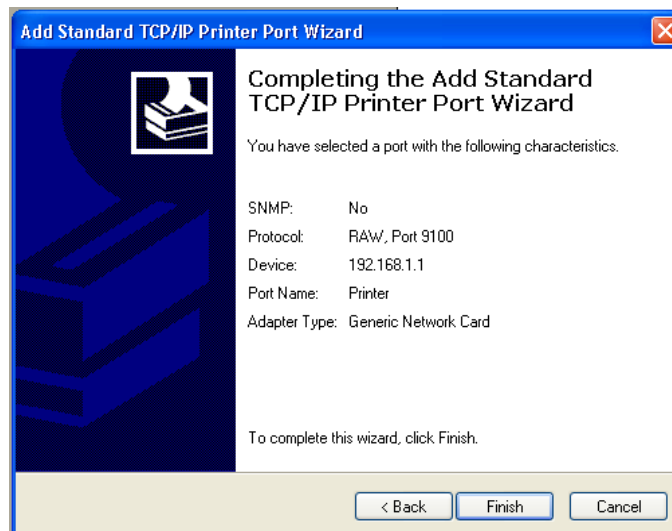
Vel "Næste"



Tasta IP-adressuna hjá beinranum inn (Vanliga 192.168.1.1).Vel "Næste"

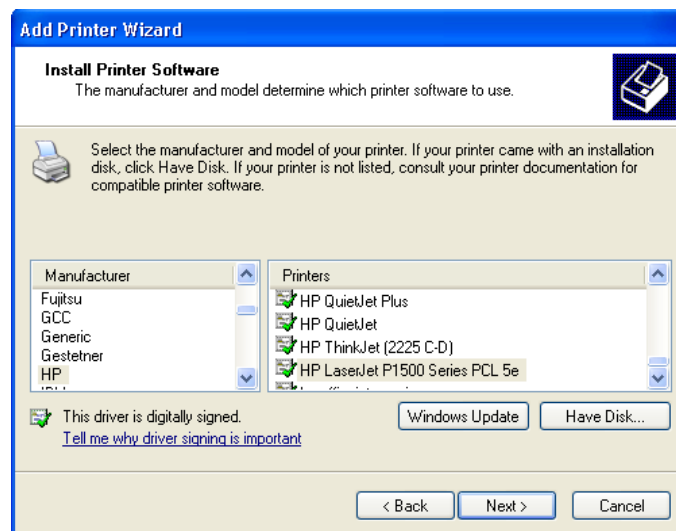


Vel "Næste"



Vel "Finish"

Nú kemur nýggj síða fram, har tú skal velja hvat slag av prentara er íbundin.



Vel "Næste" til liðugt er.